

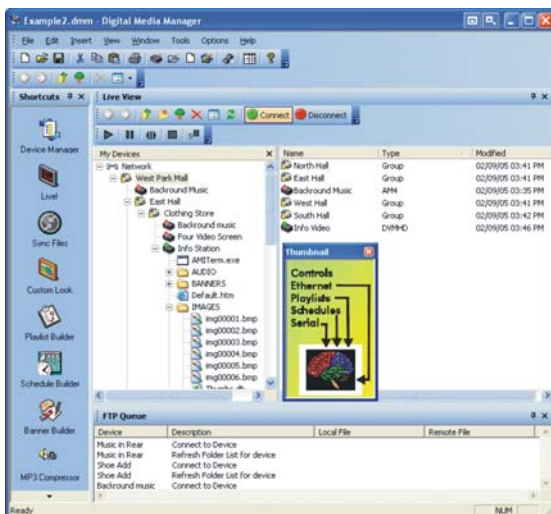


Compact Flash Video Player

The Digital Video Machine™ is a compact MPEG-2 player that's rugged enough for the most demanding applications. It also offers very flexible control capabilities and a wealth of interface options.

Clips are stored on CompactFlash; just copy them from your PC. You can trigger clips using contact closures, playlists, real-time schedules or RS-232. Connect a GPS "mouse" and video plays automatically as the unit moves through geographical zones you define!

The Digital Video Machine offers many exciting options: A stereo amplifier gives you two channels at 20 Watts each; the pro-audio module provides balanced, S/PDIF and Dolby 5.1; a SMPTE-259M SDI module provides digital video out. With the optional Ethernet module you can update clips, schedules and GPS coordinates remotely – even using wireless networking!



Digital Media Manager software lets you update one or a thousand units remotely — even across the Internet

The Digital Video Machine fits almost anywhere and is vibration resistant, so it's equally at home in equipment rooms or on-board vehicles.

Contact Alcorn McBride today for a demonstration.

Applications

- Theme Parks
- Museums
- Kiosks
- Cruise Ships
- Transportation

Controls

- Playlists
- Schedules
- Contact Closures
- Serial RS-232
- GPS Mouse Input
- Optional Ethernet

Features

- PAL or NTSC
- Compact
- Shock Resistant
- Rack/Wall Mount
- Amplifier Option
- Ethernet Option
- RGB/SDI Option

**Alcorn
McBride
Inc.**

3300 S. Hiwassee Rd.
Building 105
Orlando, FL 32835
Tel (407) 296-5800
Fax (407) 296-5801
info@alcorn.com
www.alcorn.com

Compact Flash Video Player

Digital Video Machine™

DVM-7400 Professional Digital Video Player

Specifications



Model DVM-7400/A/E

Model Number	Base Unit Ethernet Amplifier Pro Audio Component Video Pro Video Digital Video	DVM-7400 /E /A /B /R /P /D
		<i>In addition to Ethernet, the unit may be equipped with any one of six output options</i>
Video	Video Format Max Bit Rate Media Playback Time Video Output Video Connector Video Resolution Aspect Ratios	MPEG-2 (ISO 13818 MP@ML) 15 Mbps maximum CompactFlash About 15 minutes per GB at 8Mbps (better than DVD quality) NTSC at 30fps, or PAL at 25fps, Interlaced RCA phono jack 704x480 NTSC; 704x576 PAL 4:3 or 16:9
Audio	Audio Output Frequency Response Line Output Level Unbalanced, Line Output Load Audio Format	Stereo unbalanced RCA Phono connectors 10 to 20 KHz +/-0.1 dB 4.07V P-P max (3.70 typical) into 20K 10K Ohm Minimum, 100pF Maximum MPEG1-Layer 2 or AC3 5.1 surround sound
Ethernet Option	Type	100 Base-T, RJ-45
Amplifier Option	Output Power	20 Watts into 8 Ohms, (15 Watts when operated from 12V power.)
Amp with Mic Option	Output Power Mic Input Push to Talk Input Remote Volume Control Inputs Controls	40 Watts into 8 Ohms, (15 Watts when operated from 12V power.) Signal +/- and shield on three screw terminals Contacts duck audio and activate mic, screw terminals Volume up and down contacts, three screw terminals Mic volume, Phantom power enable pushbutton
Pro Audio Option	S/PDIF Digital Audio Out Balanced Stereo Audio Out	IEC958 (Stereo or AC3 audio), RCA phono jack +4dB, Dual Female XLR and 1/4 inch phone jack (combo)
Component Option	RGB Out	RGBHV(480p, 576p) or YUV(480p, 576p), HDB-15F
Pro Video Option	RGB Out Video Sync In S/PDIF Digital Audio Out	RGBHV(480p, 576p) or YUV(480p, 576p), HDB-15F composite or black burst sync input, BNC IEC958 (Stereo or AC3 audio), RCA phono jack
Digital Video Option	SDI Digital Video Out S/PDIF Digital Audio Out Video Sync In	SMPTE-259M, BNC IEC958 (Stereo or AC3 audio), RCA phono jack composite or black burst sync input, BNC
Control	Parallel Serial Response Time Buttons Display Switches Pots GPS	parallel inputs select 15 clips, play, stop, loop, mute, DB-37F RS-232, DB-9M Less than 33 msec. Front panel test button Front panel bi-color LED Ground lift, contact/voltage control, GPS Enable, Write Protect Audio Volume Control NMEA 0183 compatible
Physical	Power Power Connector Size Weight Operating Temperature Operating Environment Shock AC Adapter Certification	9 VDC to 26 VDC at 2 Amp Barrel connector (2.5 mm x 5.5 mm x 10 mm) 7"W x 7"D x 1.5"H (17.75 cm W x 17.75 cm D x 4.45cm H) 4 lbs. (1.8 Kg) 0°C (32°F) to 38°C (100°F), free air circulation 0-90% relative humidity, non-condensing 20 g max Vibration (Compact Flash), 1g (hard drive) Specify 120 VAC 60Hz or 240 VAC 50Hz CE
Mounting Kits	Wall Mount Single 19" Rack Panel Dual 19" Rack Panel	Model DMW1 Model DMRP1A Model DMRP2A



Specifications Subject to Change Without Notice

Alcorn McBride Inc.

3300 S. Hiwassee Rd.
Building 105
Orlando, FL 32835
Tel (407) 296-5800
Fax (407) 296-5801
info@alcorn.com