

Show Control

Lighting Control

Video Players

Audio Players

Every show is different,
but a unique vision requires
unique products...



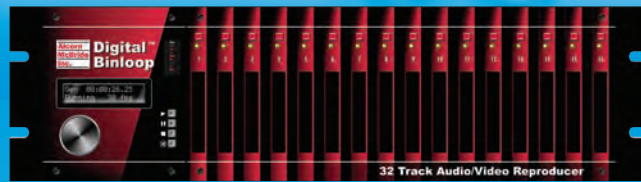
**Our products are at the heart
of the world's most popular
attractions.**

**Alcorn
McBride
Inc.**

Welcome to

**The Sights and Sounds
Behind the Scenes!** SM

Audio Players



Digital Binloop™

is our flagship audio reproducer. There's a reason why it's the standard for high-end, multi-channel audio reproduction in the world's leading theme parks.

- ✓ Up to 32 independent tracks of 16- or 24-bit digital audio
- ✓ Any or all tracks can be synchronized with each other or an external source
- ✓ Outputs:
 - Balanced/Unbalanced Analog
 - AES/EBU or S/PDIF
 - CobraNet™ option
- ✓ Control:
 - RS-232
 - MIDI Show Control
 - Contact Closures/Voltage Inputs
 - Ethernet
 - SMPTE (can be locked to external NTSC or PAL video sync)
- ✓ Audio is stored on a CompactFlash card (no moving parts!)

The ultimate multi-channel audio solution



Digital Audio Machine™

is a professional MP3 and WAV player with all of the interfaces you need.

- ✓ RS-232 or Contact Closures/Voltage Inputs for remote control
- ✓ Real-Time Scheduler and Playlisting for intelligent stand-alone operation
- ✓ Available options:
 - GPS for vehicle applications
 - Ethernet for remote update of audio, schedules, playlists, and more
 - 20Wx2 stereo amplifier
 - Pro audio with Balanced and S/PDIF Digital outputs
- ✓ Sounds are stored on a CompactFlash card (no moving parts!)

Great for messaging, kiosk, and vehicle-based applications



AmpTraXX™

high quality MP3 audio playback with microphone input for BGM playback with live or pre-recording paging in each zone.

- ✓ Ethernet for remote updating
- ✓ Microphone/Aux Input for Zone Paging
- ✓ Real Time clock scheduling
- ✓ Over 100 hours of playback
- ✓ RS-232, MIDI, and Ethernet for control

Perfect for retail, museums, and visitor centers.

8 TraXX™

lets you play up to 8 independent stereo audio tracks from a single, economical rack-mount unit.

- ✓ Ethernet for remote updating
- ✓ Real Time clock scheduling
- ✓ Front panel display with control knob RS-232, MIDI, and Ethernet for control

Perfect for dark rides, museums, and interactive displays



Show Control

NEW



V16 Pro™ / V4 Pro™

For over 20 years, Alcorn McBride has been the leader in Show Control. The V16+ is the standard for Show Control in theme parks, restaurants, retail, museums and casinos.

Combining the stability and functionality of the V16+ with entirely new features including Ethernet control/networking, real-time clock/calendar scheduling, a live show interface and a timecode reader/generator, the V16 Pro is the future of Show Control and the perfect product to carry on the legendary V16 name!

✓ I/O:

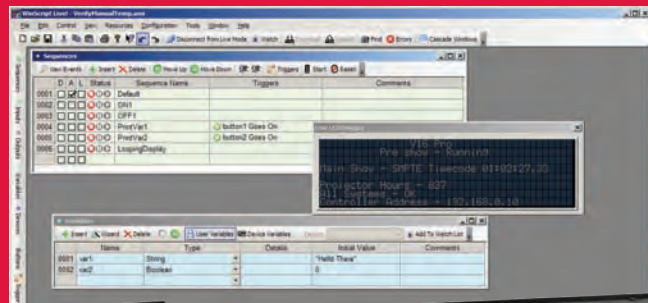
- Ethernet control of external devices
- 16 software-configurable RS-232/422/485 ports (4 in V4 Pro)
- 16 discrete inputs (Voltage or Contact Closure - no hardware configuration necessary)
- 16 relay outputs

✓ Synchronization:

- Real-time clock/calendar for scheduling of sequences
- Timecode reader/generator - SMPTE/LTC (V16 Pro)
- Video sync input for frame synchronization

✓ Programming:

- Program using our free WinScript Live! software - no more compiling or searching for protocols
- Program can be updated remotely using Ethernet or by inserting a new CompactFlash card
- Front panel display with control knob (interface functionality is programmable)
- Connect using Ethernet
- USB or serial
- Build a custom graphical user interface with our Touch software and available ShowTouch panel



NEW

ShowTouch™



Lighting Control

NEW



LightCue Pro™

is a new 4-universe DMX recorder/player. Program your lighting using the console of your choice, record the DMX data onto the LightCue Pro™ in real-time and then take your expensive console away!

- ✓ 4 DMX-512 outputs
- ✓ Control:
 - Ethernet
 - RS-232
 - SMPTE
 - Real-Time Scheduler
 - Contact Closures/Voltage Inputs
- ✓ DMX data is stored on a removable CompactFlash card (no moving parts!)
- ✓ Editing tools allow you to easily modify your lighting data

The ultimate in convenience and reliability - now with even more power!

NEW

DMX OverRide™



is the ultimate DMX utility device. In normal operation, it simply feeds through your DMX stream from your console. If the DMX drops out, the OverRide will automatically take over and run your pre-recorded cue. If the fire alarm triggers, it will run another cue. Plus, the front panel buttons allow for easy access to worklights, lamp checks, etc.

- ✓ DMX-512 Input, Output
- ✓ Control: Contact Closures/Voltage Inputs
- ✓ Front Panel pushbuttons for easy cue recall
- ✓ Internal rechargeable battery backup

The ultimate backup solution for any DMX application

DMX Machine™



is a powerful and economical solution to your lighting control applications. It combines the power of our ScriptOS show control operating system with 512 channels of DMX control.

- ✓ A complete show controller with a DMX-512 output
- ✓ One additional RS-232 port for controlling another device (such as an audio or video player) or for control by another device (touchscreen or third-party controller)
- ✓ Program using our free WinScript software, then take the PC away!

Lighting and Show Control in one box

Video Players

Video Binloop™

brings you the power and flexibility of up to 16 tracks of digital video and audio in only 3 units of rack space.



- ✓ Up to 16 tracks of digital video, each with stereo audio
- ✓ Any or all tracks can be synchronized with each other or an external source
- ✓ Outputs:
 - Video • Component (YPrPb) • RGBHV • Composite
 - SDI option (SMPTE 259M)
 - Audio • Balanced/Unbalanced Analog • AES/EBU or S/PDIF
 - CobraNet™ option
- ✓ Control: • RS-232 • MIDI Show Control • Contact Closures/Voltage Inputs
- SMPTE (can be locked to external NTSC or PAL video sync) • Ethernet
- ✓ Videos are stored on a CompactFlash card (no moving parts!)

Your best solution for multi-channel video in a compact package

Digital Binloop HD™

is the ultimate multi-track video player – up to 8 channels of stunning, high-definition video in only 3 rack units.



- ✓ Up to 8 channels of high-definition video, each with stereo audio
- ✓ Any or all tracks can be synchronized with each other or an external source
- ✓ Outputs:
 - Video • Component (YPbPr) • Composite (CVBS Standard Definition) Monitor Output
 - HD-SDI (SMPTE 292M) with embedded audio • HDMI
 - Audio • Balanced/Unbalanced Analog • AES/EBU • CobraNet™ option
- ✓ Control: • RS-232 • MIDI Show Control • Contact Closures/Voltage Inputs
- SMPTE (can be locked to external NTSC or PAL video sync) • Ethernet
- ✓ Videos are stored on a CompactFlash card (no moving parts!)

A powerful multi-channel high-definition video system in a compact package

Digital Video Machine™

is a compact MPEG-2 player that can be installed almost anywhere and is rugged enough for transportation applications.



- ✓ RS-232 and Contact Closures/Voltage Inputs for remote control
- ✓ Real-Time Scheduler and Playlisting for intelligent stand-alone operation
- ✓ Available options:
 - GPS for vehicle applications • 20Wx2 stereo amplifier
 - Ethernet for remote update of video, schedules, playlists, and more
 - Pro Audio with Balanced and S/PDIF Digital outputs
 - Pro Video with SDI (SMPTE 259M) and External sync
- ✓ Videos are stored on a CompactFlash card (no moving parts!)

Perfect for messaging, kiosk, and vehicle-based video applications

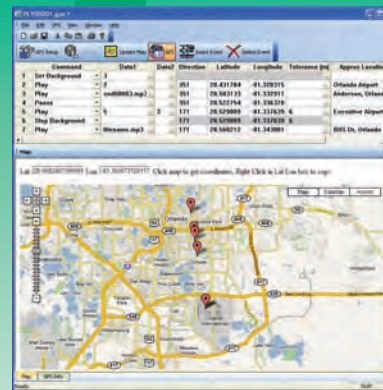
Digital Video Machine HD™

provides stunning high-definition video playback in a compact and rugged package with a variety of flexible control options.



- ✓ RS-232, Ethernet and Contact Closures/Voltage Inputs for remote control
- ✓ Real-Time Scheduler and Playlisting for intelligent stand-alone operation
- ✓ Ethernet for remote update of video, schedules, playlists, and more
- ✓ Outputs:
 - Video • HDMI • HD-SDI (SMPTE 292M) with embedded audio
 - Component (YPrPb)
 - Composite (CVBS Standard Definition) Monitor Output
- ✓ Control: • RS-232 • Contact Closures/Voltage Inputs • Ethernet
- ✓ Videos are stored on a CompactFlash card (no moving parts!)

The ultimate high-definition video player



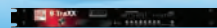
Audio



Digital Audio Machine™



Digital Binloop™



8 TraXX™



AmpTraXX™

Audio

Channels	1 Stereo	32 Independent or Synced	8 Stereo	16
Dynamic Range	96 dB	96 dB	96 dB	
Format	MP3, WAV	16 or 24 bit PCM, WAV, AIFF, Raw PCM	MP3	
Sample Rate	Up to 48KHz	32 KHz, 44.1 KHz, 48KHz, 96 KHz	Up to 48KHz	
Unbalanced	(2) RCA Phono	(32) RCA Phono	(16) RCA Phono	(16) RCA Phono
Balanced	Option (2) XLR	4 x DB-25F		2 x DB-25 (Optional)
Digital Audio	Optional S/PDIF, PCM Stereo - RCA Phono	S/PDIF, AES - 2 x DB-37F		
Amplifier	Optional (20W x 2)			16x20W

Timecode

Format		SMPTE or EBU		
Frame Rates		23.976, 24, 25, 29.97, 30		
Reader		Yes		
Generator		Yes		
Triggers		256		

Display

Type	Status LED	VFD, 8 Status LEDs Reproducer Status LEDs	Status LED (9): 1 System, 8 Channels	LEDs: Power, 8 x Signal Present, 8 x Clip
-------------	------------	--	---	--

Parallel Control

Format	Contact Closure or Voltage	Contact Closure	Contact Closure or Voltage	
Function	4 Dedicated, 4 Encoded File Selects	8 Group Triggers, SMPTE Start/Stop, Reproducer Start/Stops, Mute All	8 x (Play/Loop, Stop, Mute)	

User Control

Pushbuttons	Start/Stop	Rotary Encoder with Push to Select, Start/Read SMPTE, Pause SMPTE, Stop, Mute All; Each Reproducer:Start/Stop	8 x Start/Stop, Mute All	Front Panel Volume Control Rear Panel Power Switch Rear Panel Configuration DIP Switch
--------------------	------------	---	--------------------------	--

Other

	100 Base T Ethernet (Optional) GPS Operation (NMEA 0183)	Blackburst (NTSC or PAL) 100 Base T Ethernet (Control) CobraNet™ Option		AmpTraXX Graphical Windows Software Application Included
--	---	---	--	---

Serial Control

RS-232	DB-9M	DB-9M	DB-9M	DB-9M
MIDI		5 Pin DIN	5 Pin DIN	

Media

	CompactFlash	CompactFlash (FAT32)	CompactFlash	
--	--------------	----------------------	--------------	--

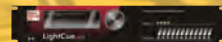
Power

Voltage	120 - 240 VAC, (Autosense)	120 - 240 VAC, (Autosense)	120 - 240 VAC, (Autosense)	90VAC to 264VAC 47 to 63Hz (Autosense)
Wattage	20W	250W	20W	400W
Approvals	CE, UL Class 2 Supply	CE, UL	CE, UL Class 2 Supply	CE,UL,CSA,TUV

Size and Weight

Package	1U Half Rack Mount	3U Rack Mount	1U Rack Mount	2U Rack Mount
Dimensions	1.75" H x 7.5" W x 9" D 4.5 cm H x 18 cm W x 18 cm D	5.25" H x 19" W x 11" D 13.3 cm H x 48 cm W x 28 cm D	1.75" H x 19" W x 5.5" D 4.5 cm H x 48 cm W x 14 cm D	3.5" H x 19" W x 12" D 48 cm H x 9 cm W x 30 cm D
Weight	4 lbs, 2 Kg	25 lbs, 11 Kg	4 lbs, 2 Kg	10 lbs, 5 Kg
Operating Temperature	32 to 100 F (0 to 35 C) Free-Flow Ventilation	32 to 100 F (0 to 35 C) Free-Flow Ventilation	32 to 100 F (0 to 35 C) Free-Flow Ventilation	32 to 100 F (0 to 35 C) Free-Flow Ventilation

Lighting



DMX Machine™

LightCue™

LightCue Pro™

Inputs			
Quantity	16	4 Dedicated, 4 Encoded	16
Type	Contact Closure	Voltage or Contact Closure	Voltage or Contact Closure
Latency	< 1 Frame	< 1 Frame	< 1 Frame
Outputs			
Quantity	2, Dedicated to File Status		
Type	Dry Relay Contacts		
Rating	24VDC Max 900 mA Max		
Latency	< 1 Frame		
Serial Ports			
RS-232	1	1	1
MIDI			1 (In)
Baud Rates	300 - 38.4 Kbaud	9600	300 - 115.2 Kbaud
Other I/O			
Description	DMX-512 Out	DMX-512 In & Out, Timecode In	4x DMX-512 In & Out, Timecode In Ethernet - 2 ports
Front Panel			
LCD	2 x 40 Backlit		8x42 Vacuum Fluorescent Display (VFD)
Control Knobs			Rotary Encoder, Push to Select
LEDs	Status, Lock		PWR, LTC, ERROR, ACK
Serial Activity LEDs	1		4 (DMX)
Input Status LEDs			12
Pushbuttons	8	6	12
Rear Panel			
ProgrammingPort	DB-9M		
Serial Ports	DB-9M	DB-9M	DB-9M
MIDI Input			5-Pin DIN Female
Discrete Inputs	DB-37F	DB-37F	DB-37F
Discrete Outputs	Shared with Inputs		
Other	DMX-512 Out on 5-pin XLR Female	DMX-512 Out on 5-pin XLR Female DMX-512 In on 5-Pin XLR Male Timecode In on 3-Pin XLR Female	DMX-512 Out on 5-pin XLR Female (x4) DMX-512 In on 5-pin XLR Male (x4) Timecode In on 3-Pin XLR Female
Power Input	Barrel Connector	Barrel Connector	Captive Barrel Jack
Show Memory			
Standard	24K	512 MB CompactFlash	CompactFlash (FAT32)
Max	24K	2 GB CompactFlash	32GB CompactFlash
Power			
Voltage	Specify 110 or 220	110 or 220	Autosensing
Wattage	20W	20W	20W
Approvals	CE, UL Class 2 Supply	CE, UL Class 2 Supply	CE, UL Class 2 Supply
Size and Weight			
Package	1U Rack Mount	1U Rack Mount	2U Rack Mount
Dimensions	1.75" H x 19" W x 5" D, 4.5 cm H x 48 cm W x 13 cm D	1.75" H x 19" W x 6" D, 4.5 cm H x 48 cm W x 15 cm D	3.5" H x 19" W x 10.25" D, 9 cm H x 48 cm W x 26 cm D
Weight	2 lbs, 1 Kg	2 lbs, 1 Kg	9.5 lbs, 4.3 Kg
Operating Temperature	32 to 100 F (0 to 35 C) Free-Flow Ventilation	32 to 100 F (0 to 35 C) Free-Flow Ventilation	32 to 100 F (0 to 35 C) Free-Flow Ventilation

Video



DVM 7400™



DVM 8400 HD™



Video Binloop™



Digital Binloop HD™

Video				
Channels	1		1	Up To 16
Format	MPEG-2 MP@ML		H.264 (MPEG-4 part 10) AP@L3 MPEG-2 (Level 4.1) MP@HL Microsoft VC-1 (MP@HL WMV9)	MPEG-2 MP@ML
Resolution	NTSC or PAL		1080i, 720p, 480p, 576p, 480i, 576i	NTSC or PAL
Max Bitrate	15 Mbps		30 Mbps	15 Mbps
Digital Video	SMPTE-259M Option		HD-SDI (SMPTE-292M), HDMI	SMPTE-259M Option
Analog Video	CVBS Standard-Optional RGBHV, RGB Component	YCbCr,	CVBS Composite (Simultaneous SD Output) Component (YPbPr or RGB)	CVBS Composite Component (YPbPr or RGB)
Up To 16				Up To 8
Up To 8				H.264 (MPEG-4 part 10) AP@L3 MPEG-2 (Level 4.1) MP@HL Microsoft VC-1 (MP@HL WMV9)
Up To 8				1080i, 720p, 480p, 576p, 480i, 576i
Up To 8				30 Mbps
Up To 8				HD-SDI (SMPTE-292M), HDMI
Up To 8				CVBS Composite (Simultaneous SD Output) Component (YPbPr or RGB)
Audio				
Format (Note)	Standard MPEG-1 Layer I/II, Optional Dolby® Digital	I/II, (AC3)	WMA-9, WMA-9 PRO, MPEG-1 Layer I/II, MPEG-2 Layer II, MPEG-4 AAC LC2-Channel/5.1 Channel, MPEG-4 AAC+SBR 2-Channel/5.1 Channel	MPEG-1 Layer I/II Dolby® Digital (AC3) PCM (WAV, AIFF, Raw PCM)
Channels	2 (5.1 Optional)		2 or 5.1	2 or 5.1
Dynamic Range	96 dB		104 dB	96 dB
Sample Rate	44.1 KHz, 48 KHz		44.1 KHz, 48 KHz	32 KHz, 44.1, 48 KHz
Unbalanced	Standard		Standard	Standard
Balanced	Option		Option	Standard
Digital Audio	IEC958/IEC1937 (S/PDIF)	Optional	IEC958/IEC1937 (S/PDIF)	IEC958/IEC1937 (S/PDIF)
Network Audio				CobraNet™ (Option)
Amplifier	Option (20Wx2)			CobraNet™ (Option)
Display				
Type	Status LED		LCD 2X16	VFD, 8 Unit Status LEDs 16 Reproducer Status LEDs
VFD, 8 Unit Status LEDs				8 Reproducer Status LEDs
User Control				
Pushbuttons	Test Button		Rotary Encoder with Push to Select	Rotary Encoder with Push to Select, Start/Read SMPTE, Pause SMPTE, Stop, Mute All; Each Reproducer:Start/Stop
Rotary Encoder with Push to Select				Rotary Encoder with Push to Select, Start/Read SMPTE, Pause SMPTE, Stop, Mute All; Each Reproducer:Start/Stop
Automation				
Playlists	Yes		Yes	Yes
Real Time Schedules	Yes		Yes	Yes
Sync				
Sync In	Option		Blackburst/C-Sync	Blackburst/C-Sync
Blackburst/C-Sync				Blackburst/C-Sync
Control				
RS-232	9600 N,8,1		9600 N,8,1	9600-38.4Kbaud N,8,1
MIDI				Yes, 31.25Kbaud
Contact/Voltage Inputs	Yes		Yes	Yes
GPS	Option		Yes	Yes
Network				
LAN	Optional 100BT		100BT Standard	100BT Standard
FTP	w/Ethernet option		Yes	
UDP	w/Ethernet option		Yes	Yes
Power				
Voltage	100-240VAC Autosense		100-240VAC Autosense	100-240VAC Autosense
Wattage	20W		20W	250W
Approvals	CE, UL Class 2 Supply		CE, UL Class 2 Supply	CE, UL, SA
Size and Weight				
Package	1U Half Rack Mount		1U Half Rack Mount	3U Rack Mount
Dimensions	1.75" H x 7" W x 9" D 4.5 cm H x 18 cm W x 18 cm D	18 cm D	1.75" H x 7" W x 9" D 4.5 cm H x 18 cm W x 18 cm D	5.25" H x 19" W x 11" D 13.3 cm H x 48 cm W x 28 cm D
Weight	4 lbs, 1.8 Kg		4 lbs, 1.8 Kg	25 lbs, 11Kg
Operating Temperature	32 to 100 F (0 to 35 C), Free-Flow Ventilation	Free-Flow Ventilation	32 to 100 F (0 to 35 C), Free-Flow Ventilation	32 to 100 F (0 to 35 C), Free-Flow Ventilation

Note: Multi-channel audio formats are multiplexed as part of the audio/video bitstream. Dolby Digital is output as a digital bitstream that requires an external decoder for conversion to analog signals.